



Anne of Green Gables

by Lara Filip

based on the novel by Lucy Maud Montgomery

Directed by Alyssa Frewen

Intimacy Advisor/Artist Advocate, Courtney Abbott

Graphic Design by Dominic Rescigno

Artwork by Avery Multer

Photography by Allegra Imagery

In association with

The Morton Arboretum

With support from

The Illinois Arts Council Agency

Produced by Inkwell Arts and Learning

www.inkwellartsandlearning.com



Notes from the *inkwell*

Trying to sum up my thoughts and feelings on Anne of Green Gables into something simple and clear and concise feels a little bit like trying to bottle sunshine (that is to say: alternatingly impossible and delightful) but I'll endeavor to do my best.

This is a story about family. This is a story about community. This is a story about homes, and names, and second chances. This is a story about the way we see ourselves, and the way others see us, and the things we can learn by looking at the world through another's eyes. This is a story about things that are invisible but indisputably real—friendship, imagination, belonging. It is a story about growing up, and all of the ridiculous, mundane, breathtakingly beautiful things that go along with being a person.

In one of our earliest rehearsals, I asked the cast to share their thoughts on why Anne of Green Gables, written 115 years ago, still endures in our hearts and minds. Not every story does, after all. It takes something very special to withstand the test of time. I didn't necessarily expect a definitive answer to this question. (Frankly, I'm not convinced that answer even exists, or that there's only one.) I learned a great many things from that discussion, though. I learned just how close it is possible to feel to a town full of fictional people whose everyday lives look almost nothing like our own. And I learned that telling this story would be, above all else, a labor of love.

Anne's superpower is seeing the beauty in the things most people take for granted, the romance in the humdrum moments of an ordinary life. Her other superpower is sharing that vision with the people around her—from the residents of Avonlea to the people gathered here in the present at the beautiful Morton Arboretum. Anne's zeal for life and relentless optimism transcend all reasonable limits of time and space. Like millions of others, and like the characters you'll meet today, I love her for that.

I hope you leave here today reminded, as I have been, how very lovely the world can be, if only you remember how to look.

Alyssa

Director

Why Hire an Intimacy Specialist for G-rated Plays in the Woods?

by Courtney Abbott

Intimacy work takes the guesswork out of physical storytelling. With guided exercises to practice establishing and honoring one another's boundaries, and a shared language to use around moments of contact, actors can experiment in rehearsal with confidence.

As an audience member, we hope you experience everything happening onstage as a believably spontaneous act. In order to achieve that illusion, we rehearse and dissect and practice practice practice. For ages theatre makers have been relying on the talent & courage of individual actors to manifest believable and meaningful moments of physical intimacy, often with no effort to draw a dividing line between what is real and what is artifice. This approach leads to, at worst, deeply damaging abuses of power, and, at best, vague storytelling with unpredictable or unrepeatable acting moments.

In this process, I guided the devising artists through exercises to demystify and destigmatize consent and boundaries. Ultimately, these actors will take any new discoveries they've made about Intimacy into their next show, and the next, creating a more consensual theatrical culture far & wide.



ALYSSA FREWEN [she/her] (Director) is a Chicago-based theatre artist and educator, and is so excited to be back at the Morton Arboretum this fall! Alyssa graduated from Florida Atlantic University with an MFA in Theatre Performance. She also holds a BFA in Musical Theatre from The Chicago College of Performing Arts at Roosevelt University. Alyssa was last seen as Kanga in *Winnie the Pooh: a Walking Play*. When not onstage, Alyssa teaches at the

Goddard School in Darien. Lots of love and gratitude to Lara and the extraordinary cast for sharing their talent and dedication.



COURTNEY ABBOTT [she/they] (Intimacy Consultant) Proud to be with Inkwell for a third summer! Chicago: *No Man's Land*, *Bald Sisters*, *Choir Boy*, *Chlorine Sky* (Steppenwolf); *Tiger Style!* and *Wife of a Salesman* (Writers); *Grease* (Drury Lane); *And Neither Have I Wings To Fly* (First Folio); *Georgiana & Kitty: Christmas at Pemberley* (Northlight); *Enough To Let The Light In* (Teatro Vista); *Hurricane Diane* (Theater Wit). Film: *Paper Planes*, *Lee Baby*,

Departing Seniors. Upcoming: *Little Voice* (Gift); *Romeo & Juliet* (Chicago Shakes). Education: MFA, Ohio University; BS, Northwestern. Courtney is a stakeholder in the Back Room Shakespeare Project. www.courtneyabbott.com



GRACE BURMAHL [she/her] (Prissy Andrews) is so excited for her first production with Inkwell Arts and Learning! Grace graduated with a BFA in Theatre from North Central College. Previous theater credits include *Hamlet* (Chicago Shakespeare Theater), *Birds of a Feather* (Greenhouse Theater Center), *The Laramie Project* (North Central College), *Antigone* (North Central College), *Wellesley Girl* (North Central College) and *Wonder of The*

World (North Central College). She would like to thank her sisters for all of their love and her mother, Lisa, for being a pillar of support.



AUDREY EDWARDS [she/her] (Anne) is thrilled to be back at the Morton Arboretum for this beautiful story of *Anne of Green Gables*! Previous theater credits include *Winnie the Pooh* (Morton Arboretum), *Matilda the Musical* (Drury Lane Theatre), *Sound of Music* (Marriott Theatre), *The Wizard of Oz* (Paramount Theatre), *The Audience* (TimeLine Theatre), *The Year I Didn't Go to School* (Chicago Children's Theatre), and *Seussical* (BTG). Audrey is a

16-year-old from the Morgan Park neighborhood of Chicago who enjoys designing costumes, sewing, and singing. Thanks to Alyssa and Lara for this wonderful opportunity!



LARA FILIP [she/her] (Playwright) is a veteran of the Chicago theatre and music scenes. She's performed on nearly every stage in town, appeared at many regional theatres and has been featured in several National tours. Most recently, she appeared as Emily Hobbs in *Elf, The Musical*, at The Paramount Theatre. Her singer/songwriter album, *Stop Time*, is available everywhere you buy and stream music. Lara is also an independent producer and

director, as well as a prolific playwright. Currently, she spends much of her time here at the Morton Arboretum as the "Chief Instigator" of Inkwell Arts & Learning, the in-house producer of the Walking Plays. She is also a regular performer with *Better Together* and *Artist's Lounge Live*, performing in bio-concert experiences, paying tribute to Dolly Parton, Al Jarraeu, Paul McCartney, Ray Charles, The Carpenters, Elvis, Glen Campbell and many others. Lara is a graduate of The Chicago Academy for the Arts and is a member of Actor's Equity Association.



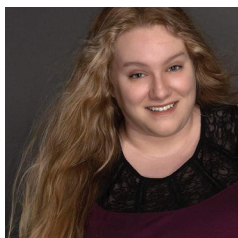
GABRIEL FRIES [he/him] (us. Matthew/Mr. Philips) is a big fan of immersive theatre, working with kids, and being in nature so is absolutely delighted to be combining all those passions with the Walking Plays! Most recently he appeared as Duke and Judge Thatcher in *Big River* at Mercury Theater Chicago. Gabriel has performed with various Chicagoland theatres including Paramount Theatre, TimeLine Theatre, Porchlight Music Theatre, Oil Lamp Theater, Lifeline

Theatre, City Lit Theater Co., Metropolis PAC, PrideArts, Adventure Stage Chicago, and Nothing Without A Company. You may have also seen him as The Conductor in *The Polar Express* ride from Union Station, or performing in local schools with GreatWorks Theatre, PlayMakers Laboratory, or Explore Theater. You can catch him in *The Merry Beggars' On the Night Train* wherever you get your podcasts! Gabriel is a graduate of Wesleyan University. Love and thanks to Mom and Dad! www.gabriefries.net.



JESSICA GOFORTH [she/her] (Rachel Lynde) is delighted to be a part of this production. Recent credits include *Cymbeline* (Midsommer Flight), *Jeeves Intervenes* (First Folio Theatre), *Antigone* (Redtwist Theatre) and *Richard III* (Promethean Theatre Ensemble). Television credits include *Chicago Fire* (NBC). She thanks Dennis, Inkwell Arts and Learning and The Morton Arboretum. This project is dedicated to the memory of her grandparents - of

her Canadian grandmother and of her grandfather, who was raised on a rural farm by foster parents - just like Anne!



ALISON KERTZ [she/her] (us. Marilla/Rachel) is a Chicago-based actor, originally from St. Louis, MO. She received her BA in Theatre (Performance) from the University of Missouri. She was an Apprentice at the Great River Shakespeare Festival in Winona, MN, where she understudied the role of Margaret in *Richard III*, and played Mortimer in *Henry VI: The Rise of Richard*. Alison achieved her MA in Acting at the Royal Conservatoire of Scotland. While at the RCS, Alison completed intensive training at Shakespeare's Globe in London, culminating in a performance of scenes on the Globe stage. Upon returning to the Royal Conservatoire in Glasgow, Alison played the titular role in *Titus Andronicus*, and was also cast as Lepidus/Eros in *Antony and Cleopatra* with Bard in the Botanics, Scotland's premier Shakespeare Festival. Back in the U.S. Alison has played Josephine in *Behind the Sheet* with the St. Louis Black Repertory Company. She is thrilled to join in on playing at the beautiful Arboretum!



MICHAEL LOMENICK [he/him] (Matthew) is delighted to return to Morton Arboretum Walking Plays, previously appearing as the Joy Morton understudy in *A Walk with Joy*. He most recently appeared as Owen in *Edge of the Woods Theatre's Light Up the Sky*. Michael has worked at Oil Lamp Theater, Artemisia Theater, Sideshow Theater Co, iO Chicago, The Goodman, The Organic, Victory Gardens, and Zebra Crossing. A proud member of SAG/AFTRA, Michael studied at The University of Oklahoma, The Theater School, DePaul, iO Chicago and received his MFA in performance from Roosevelt University. Thanks, Eric, for all the support and love.



ZOE MAROKO [she/her] (Miss Stacy) Originally from New Jersey, Zoe is a current student at Northwestern University, studying theatre and neuroscience, and is in the musical theatre certificate program. Previous credits include Daisy Buchanan in *Gatsby - An American Musical* (Woodstock Playhouse), Alyson in *The Confession* (Blue Gate Theatricals), Kate Monster (u/s) in *Avenue Q* (Music Theatre Works), Ophelia in *By Any Other Name* (American Music Theatre Project), Helga / Fraulein Kost (u/s) in *Cabaret* (Woodstock Playhouse) and Ark Adventures (dir. Jonathan Chapman). Zoe also serves as artistic director of Seesaw Theatre at Northwestern University, a group dedicated to creating accessible multisensory theatre for autistic and otherwise disabled audiences, and advocates for disability justice.



SOREN MARTIN [he/him] (Charlie / us. Gilbert), a Lisle High School senior, is delighted to return to The Morton Arboretum for his second walking play. Now in his sixth year of acting in the Lisle school system, he's played Oz in *The Wizard of Oz*, Bottom in *A Midsummer Night's Dream*, and Dr. Sanderson in *Harvey*. He thanks his mom, dad, and brother for their support.



LYA NABWANGU [she/her] (Diana) is excited to be part of another show at the Morton Arboretum. Last year she performed here in *A Walk With Joy* and *Winnie the Pooh*. Some of her previous roles have been Dana in *Camp Rock, Jr.*, Donkey in *Shrek, Jr.* and Hermey in *Elf, Jr.* at Ovation Academy of the Performing Arts and Bravo Performing Arts in Oak Park, IL. She has loved participating in the Junior Theater festival in Sacramento, CA with Ovation

Academy. Thank you to my family for believing in me, Ragan Hughes for her support, and Alyssa and Lara for giving me the chance to be part of this show!



ELLA SCHULER [she/her] (Jane Andrews / us. Ruby / Diana) is overjoyed to be a part of her first production with Inkwell Arts and Learning! Ella is a senior at Plainfield North High School. Her favorite roles include Beth March in *Little Women* (PNHS), Mr. Krabs in *Spongebob the Musical* (PNHS), and Gretl in *The Sound of Music* (Brightside Theatre). Thank you Mom, Dad and Lucas for all your love and support!



JEANNE SCUREK [she/her] (Marilla Cuthbert) is thrilled to be working with Inkwell Arts for the first time and equally as thrilled to be back performing at Morton Arboretum; having previously been seen here with Theatre-Hikes in *Night of the Living Dead*, *Our Town*, *Robin Hood* and *Rebecca of Sunnybrook Farm*. Favorite roles include Mrs. Van Daan in *The Diary of Anne Frank* (Metropolis Performing Arts), Argante in *Scapin* (Citadel Theatre), and Irina in *The Seagull*

(Dominican University). Other Chicago area theatres she's worked at include Oil Lamp Theatre, Redtwist Theatre, First Folio Theatre, Windy City Playhouse, and Steel Beam Theatre. Next up for her theatrically will be the role of Alice in *So Now, What?* for 2nd Act Players in Evanston. On-camera work includes a co-star role on Showtime's *Work in Progress*, a recurring, supporting role in the web series *Act of Faith* and in early 2024, Jeanne will be filming a leading role in a feature film in Dubai. Recent voice over work includes 5 audiobooks currently available on Audible. Thank you Daniel for supporting and believing in me. I will miss you forever.



EMILY SHERMAN [she/her] (Ruby Gillis) is so excited to be working with Inkwel Arts on this magical show! Emily was born and raised in Houston, TX, but has been a midwest transplant since graduating with her BFA in Musical Theatre Performance from Western Michigan University. Notable credits include *Bullets Over Broadway*, *Beauty and the Beast*, and *Hairspray* (The Barn Theatre), *The Comedy of Errors* (Houston Shakespeare Festival), *Women on the Verge of a*

Nervous Breakdown and *Violet* (Western Michigan University). She is also a director and theatre educator in the Chicagoland area. This was the first book Emily fell in love with, and it is a joy to revisit Avonlea. Many thanks to Mom, Dad, and Benjamin for their unconditional love and support!



JALEN SMITH [he/him] (Gilbert) is very excited to be a part of Inkwel Arts and Learning's production of *Anne of Green Gables*. His most recent work includes The Goodman Theater's production of *A Christmas Carol* as Boy Scrooge. He has trained at The Second City in Chicago, and is the president of the theater department at Lindblom Math and Science Academy. Jalen has participated in many school productions as well. Outside of school, he enjoys

participating with the YMCA of Metropolitan Chicago's Teen Advisory Council. Jalen looks forward to participating in many more productions in the near future. He also dreams of majoring in theater in college at the University of Southern California.



SKYLER TIPTON [he/him] (Mr. Phillips/Walk Leader) is delighted to have this be his first show with Inkwel Arts and Learning. Originally from Tamarac, FL, Skyler moved to Chicago after graduating with his MFA in Acting from Purdue University. He obtained his B.A. in Performing Arts from Clemson University. Notable previous credits include, Peter Sloan in *Light Up The Sky* (Edge of the Wood Theatre), Duke Orsino in *Twelfth Night* (Upstate

Shakespeare Festival), Randolph Jr./T.C. Crawford in *Hatfield's & McCoy's* (Theatre West Virginia), Jason in *Sweat* (Purdue University), East/Dave in *Almost, Maine* (Clemson University), and Algernon in *The Importance of Being Earnest* (GTC). Skyler would like to thank his beautiful wife, Yentl, for all of her love and constant support.

The Experience

A walking play at The Morton Arboretum is like nothing you've ever experienced!

Check-in will take place right off Parking Lot 21, at Thornhill Shelter. We will then walk as a group to the first location. From there, we will visit scenes in eight locations. Our central location represents Green Gables, so we will visit that spot more than once to give the feeling of "home", a central theme in the story.

We've got some open sunny spots and some shady woodland spots, so bring sunscreen and bug spray! Some people choose to sit on blankets on the ground, some bring a portable chair and some like to stand. The Walk Leaders will help make sure everyone can see and hear everything.

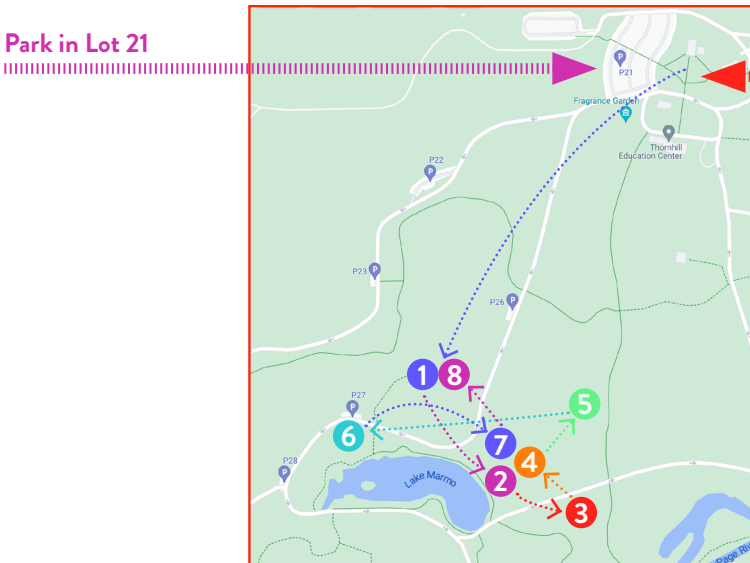
After the show, you are free to return to Thornhill Shelter or to continue enjoying and exploring the trails around Lake Marmo and nearby Joy Path.

In total, we will travel about a mile and three-quarters, over the course of approximately 2 hours. As always, our trusty Morton Arboretum volunteers will be on hand to help guide our way. We hope you enjoy the journey!

*On days with inclement weather, and on our accessible walk days, we'll stay in the area adjacent to Thornhill Shelter, covering about a half-mile, all easily accessible by entirely paved pathways.

For a closer look at the full route, here is a map that shows you where the locations are for each scene.

Park in Lot 21



**Meet at
Thornhill Shelter**

ANNOUNCING OUR 2024 SEASON

THE HOUSE AT POOH CORNER

SUMMER 2024

Little Red

A BIG, BAD, HAIRY, SCARY, CONTEMPORARY FAIRY TALE

FALL 2024



for more information or to stay up to date on the
happenings at Inkwell, visit us at
www.inkwellartsandlearning.com